



Policy Evaluation
Research Institute

President's Message

Policy belongs to the people, but our people have always been isolated and victimized by populism.

For this reason, we need to evaluate policies to ensure that they are no longer an object of indifference to the people or a means of deception.

The Policy Evaluation Research Institute (PERI) will fulfill this task of the times. We will gather policy experts from Korea and around the world to properly evaluate each policy and ensure that the public is involved and centered in the pre- and post-evaluation process.

PERI launches *askPERI*, an AI-based, all-in-one policy platform on January 1, 2024

askPERI offers consolidated search results and analysis of policy information scattered across various sources, including the National Assembly, the government, and public institutions. Additionally, it provides tailored information services for registered members from the government, businesses, associations, public institutions, media, and more.

As a private research institute, PERI will always stand with the people, playing a significant role for making right policies and contributing to the development of Korean society.

Thanks for your interest and support.

2024. 2

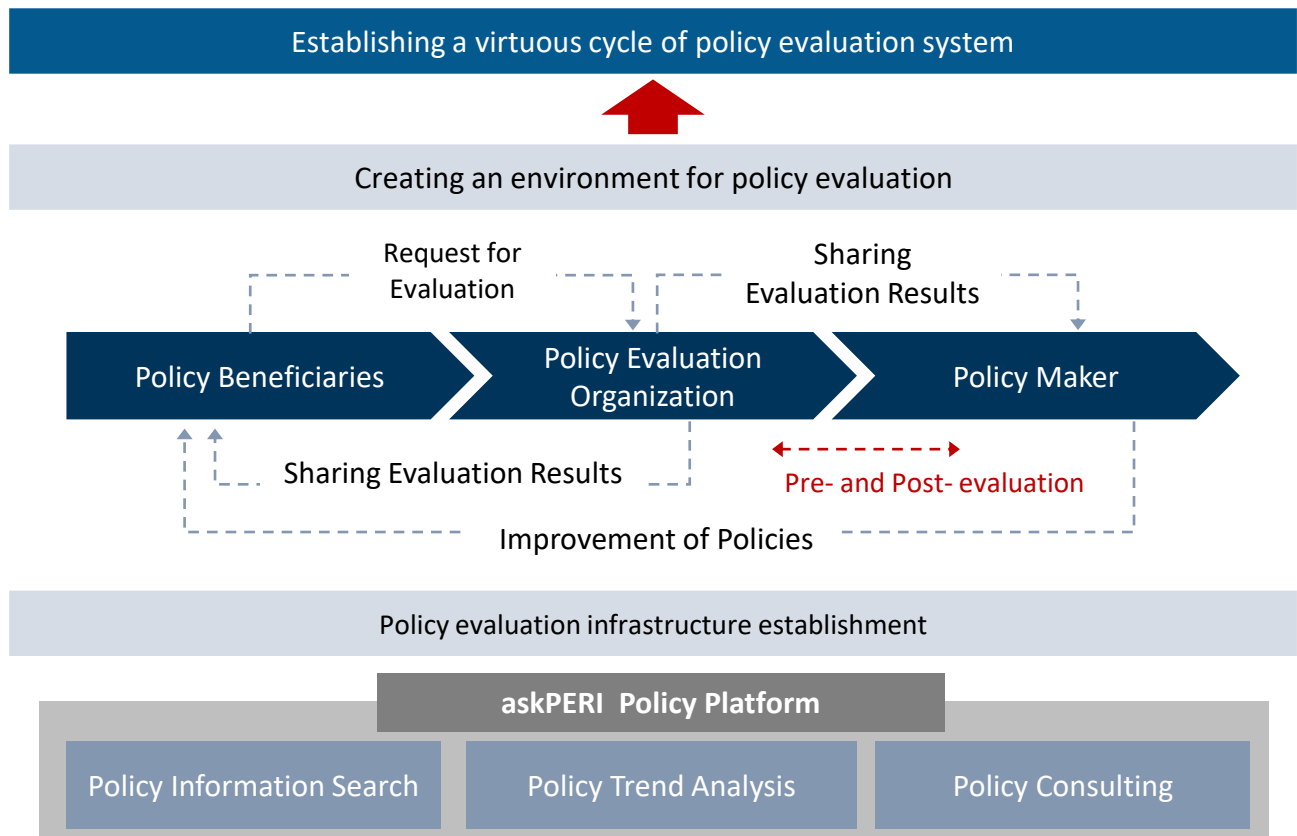
Chong-Bum An
President, Policy Evaluation Research Institute (PERI)

Goals and Vision

- PERI set the goal to be Korea's leading private think tank.

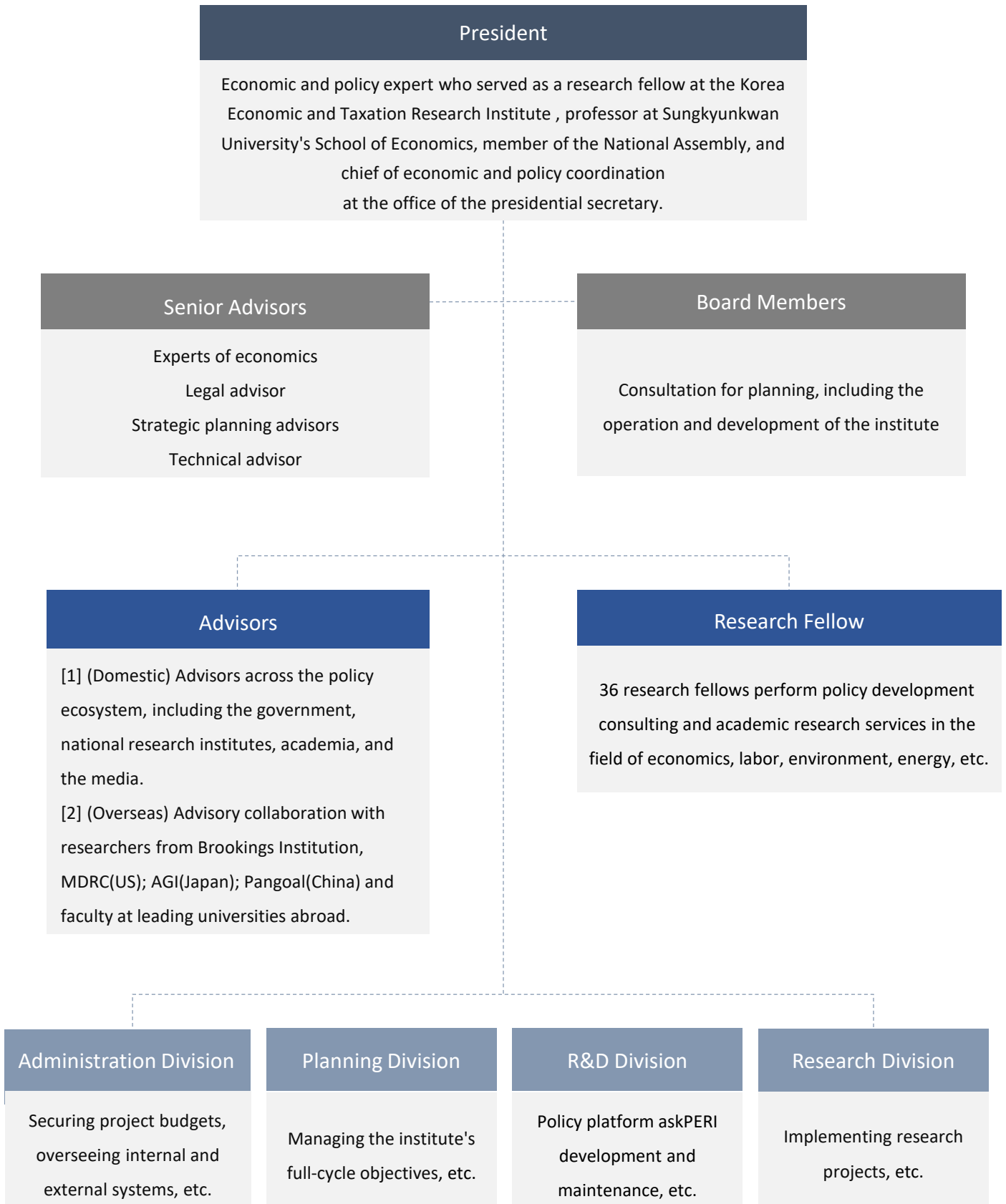


- PERI will lay the foundation for the policy evaluation system.



Organization

- PERI works with top-class domestic and international experts.



Senior Advisors (3)

In-ho Kim	<p>Chairman, Market Economics Research Institute (Former) Chairman, Korea International Trade Association (Former) Presidential Economic Advisor (Former) Chairman, Fair Trade Commission</p>
Seung-hoon Lee	<p>Emeritus Professor, Department of Economics, Seoul National University (Former) Chairman, Presidential Committee on Green growth (Former) President and CEO of Korea Gas Corporation (Former) Professor of Economics, Seoul National University</p>
Hak-gil Pyo	<p>Emeritus Professor, Department of Economics, Seoul National University (Former) Member of the Presidential Advisory Policy Planning Committee (Kim Young-sam government) (Former) President, Korea International Economic Association (Former) Professor of Economics, Seoul National University</p>

Legal Advisor (1)

Young-kun Hong	<p>Representative Attorney at Law Firm Dajeon (Former) Associate Judge of Suwon District Court</p>
----------------	---

Strategy Advisors (2)

Soo-hyun Kang	<p>Advisor, SM Entertainment CEO, The Name Project (Former) Division Director, SM C&C</p>
Dong-won Cho	<p>Advisor, SM Entertainment Copywriter, The Name Project (Former) Director, Munhwa Industry Forum</p>

Technology Advisor (1)

Ki-hyun Kim	<p>CEO, Transfarmer Korea Representative, DAMA(Data Management Association) Professor, Dept. of Convergence Service Management, Hallym University of Graduate Studies Director, Dept, of Strategic Consulting, KPMG Samjong Accounting Corp.</p>
-------------	---

Board Members (3)

Byung-in Lim	Professor of Economics, College of Social Sciences, Chungbuk National University (Former) Director of Korea Social Security Information Service (Former) Advisor to National Economic Advisory Council
Hyun-soo Choi	Head of Coordination Support Center for New and Changed Social Security System (Former) Head of Social Security Finance and Policy Research, Korea Institute for Health and Social Affairs
Suk-Kwack Hwang	(Former) National Assembly Aide to the National Assembly Secretariat (17-20s) (Former) Deputy director of the Ministry of Government Administration and Home Affairs (Former) General Manager of National Pension Service(NPS)

Research Fellows (36)

Tax	Nak-hoe Kim	Advisor at Law Firm Yulchon (Former) Commissioner of Korea Custom Service
	Won-ik Son	Visiting Professor, Yonsei University Graduate School of Social Work (Former) Vice President, Korea Institute of Public Finance
	Gyeong-lyeob Cho	Senior Research Fellow, Korea Economic Research Institute (Former) Team Leader, Revenue Tax Analysis, National Assembly Budget Office
Welfare Pension	Sang-ho Kim	Professor of Basic Education, Gwangju Institute of Science and Technology (Former) President, Korea Institute for Health and Social Affairs
	Hyung-pyo Moon	(Former) Chairman of National Pension Service (Former) Minister of Health and Welfare
Macro-economy	Jung-soo Park	Professor of Economics, Sogang University (Former) President of Korean Association of Applied Economics
Finance	Dong-hyun Ahn	Professor of Economics, Seoul National University (Former) President, Korea Capital Market Institute

Research Fellows (36)

Public Finance · Education · Public Reform	Sang-heon Kim	Professor, Graduate School of Public Administration, Seoul National University (Former) Professor of Public Administration, Hankuk University of Foreign Studies
	Il-ho Yoo	Special Professor, Yonsei University Business School (Former) Deputy Prime Minister for Economic Affairs and Minister of Strategy and Finance
	Young Lee	Professor of Economics and Finance, Hanyang University (Former) Deputy Minister of Education
	Young-joon Jeon	Professor of Economics and Finance, Hanyang University (Former) Research Fellow, Korea Institute of Public Finance
Real Estate · Regional Development	Kyung-hwan Kim	Research Professor, Department of Economics, Sogang University (Former) 1st Deputy Minister of Land, Infrastructure, and Transport
	Hyun-a Kim	Visiting Professor, Gachon University (Former) Member of the 20th National Assembly
	Duk-bae Park	Professor, Kookmin University (Former) Specialized Researcher, Hyundai Research Institute
	Hyung-ho Yoon	Honorary Research Fellow, Seoul Institute (Former) Director of Seoul Public Investment Management Center, Seoul Institute
	Won-jae Lee	(Former) First Vice Minister of Land, Infrastructure, and Transport (Former) Commissioner, Incheon Free Economic Zones
Energy · Environment	Man-ok Kang	Specialized Professor, Busan University (Former) Senior Research Fellow, Korea Environment Institute
	Hyung-gun Kim	Professor, Kangwon National University (Former) Research Fellow of Energy Economics Research Center
	Joo-heon Park	Professor of Economics, Dongduk Women's University (Former) President of Energy Economics Research Center
	Yang-hoon Son	Professor, Department of Economics, Incheon National University (Former) President, Korea Energy Economics Institute
	Won-chul Yoon	Researcher, Korea Electric Power Industry Institute (Former) Professor of Economics and Finance, Hanyang University

Research Fellows (36)

Science · IT	Do-hwan Kim	Professor of Business Administration, Sejong University (Former) President, Korea Information Society Development Institute
	Hyung-taek Ahn	Professor, Department of Economics, Dongguk University (Former) Research Fellow, Korea Information Society Development Institute
	Chang-bun Yoon	Counselor, Kim & Chang Law Firm (Former) Senior Secretary for Future Strategy, Presidential Secretariat
	Shin Cho	Visiting Professor, Yonsei University Graduate School of Information (Former) Senior Secretary for Future Strategy, Presidential Secretariat
Labor	Dae-il Kim	Professor, Seoul National University (Former) Researcher, Korea Development Institute
	In-jae Lee	Professor, Incheon National University (Former) President, Korea Labor Institute
Regulation · Industry · Small and Medium-sized Business	Se-jong Kim	President, Innobiz Policy Research (Former) President, Korea Small Business Institute
	Jong-Seok Kim	(Former) Member of the 20th National Assembly (Former) Professor, Hongik University
	Joo-hyun Cho	(Former) Vice Minister, Ministry of SMEs and Startups (Former) Office Head of Small Business Policy, Ministry of SMEs and Startups
	Sung-ho Choi	Professor, Kyonggi University of Public Administration, (Former) Secretary, Ministry of Trade, Industry and Energy
Culture	Myung-seong Park	Art Director of Seensee Company (Former) Director of Korea Musical Association
	Eun-ah Cho	Professor, Graduate School of Chugye University for the Arts Commissioner, Regulatory Reform Commission, Ministry of Culture, Sports and Tourism
Population · Society · Low Fertility	Seul-gi Choi	Professor, KDI School of Public Policy and Management Senior Research, Institute for Social Development and Policy Research, Seoul National University
	Joon Han	Professor of Sociology, Yonsei University (Former) President of Korea Social Science Data Archive
Agriculture Oceans Fisheries	Hak-bae Yoon	Distinguished Professor, National Korea Maritime and Ocean University (Former) Vice Minister, Ministry of Oceans and Fisheries

PERI Major Events

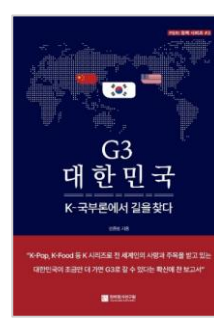
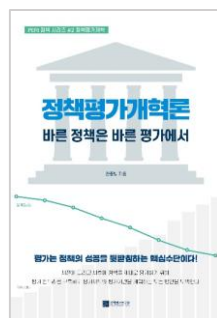
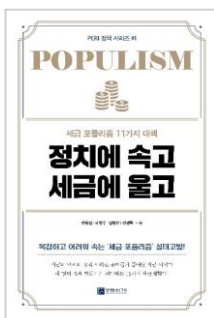
2022.05.23.	Establishment of PERI
2023.01.20.	Publication of PERI Book #1; "Fooled by Politics, Crying over Taxes"
2023.03.13.	Publication of PERI Book #2; "Policy Evaluation Reform: The Right Policy Starts with the Right Evaluation"
2023.03.14.	2023 PERI Vision Meeting
2023.06.19.	MOU between PERI and Pangoal(China)
2023.06.20.~21.	Hosting PERI Symposium 2023 with theme of 'A New Horizon for Policy Evaluation'
2023.07.25.	Publication of PERI Book #3; "G3 South Korea: Finding the Way"
2023.09.06.	Certification as Venture Enterprise by Korea Venture Business Association
2023.09.25.	MOU between PERI and Law Firm Hwawoo(Yoon & Yang LLC)
2023.10.12.	MOU between PERI and AGI(Asian Growth Research Institute, Japan)
2023.11.14.	Publication of PERI Book #4; "A New Horizon for Policy Evaluation"
2024.01.01.	Launch of askPERI (AI-based, All-in-one Online Policy Platform)

On June 20 and 21, 2023, PERI Symposium 2023 was held at COEX Auditorium under the theme of 'A New Horizon for Policy Evaluation'.

The symposium was held in six sessions ① Policy Evaluation Research, ② Welfare Policy, ③ Taxation and Fiscal Policy, ④ Labor and Population Policy, ⑤ Financial and Industrial Policy, and ⑥ Housing and Urban Policy. World-renowned scholars in each field were invited to explore the contribution of policy evaluation system to policy development and to diagnose Korea's policy and policy evaluation environment.



PERI has published PERI Policy Series.



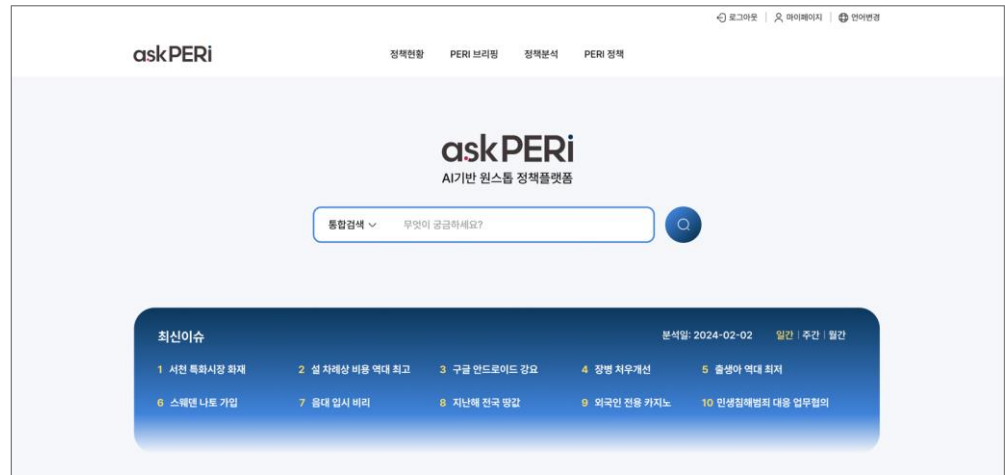
askPERi

AI Based Policy Platform

1. Consolidated Search Result in One Place

askPERi generates consolidated search results of policy data scattered across multiple sources, including parliament, government, public organizations, and more.

All About Policy
askPERi



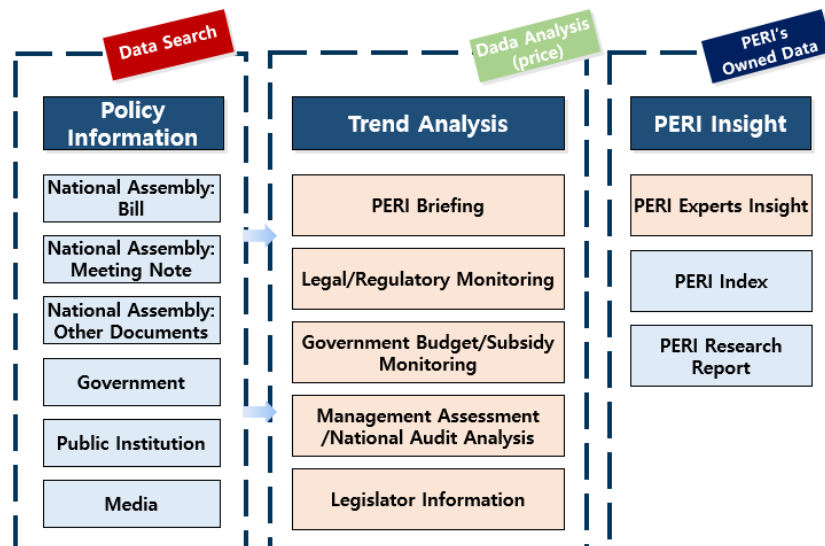
* Korean language service only.

2. Policy Trend Analysis

askPERi keeps you abreast of the latest developments in crucial legislative changes, regulations, government policies, and more through the following services:

- ① Legal/Regulatory Monitoring
- ② Government Budget Monitoring
- ③ Integrated Analysis of Bills
- ④ Legislator Information
- ⑤ Management Assessment/
National Audit Analysis
- ⑥ PERi Expert Insight

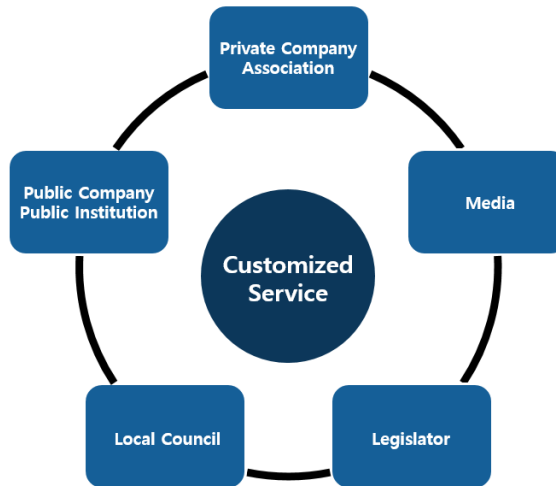
askPERi
Service Map



- askPERI is an AI-based, all-in-one policy platform developed by PERI to provide the following services.

3. Customized Service

askPERI provides tailored information services for registered members from the government, businesses, associations, public, institutions, media, and more.

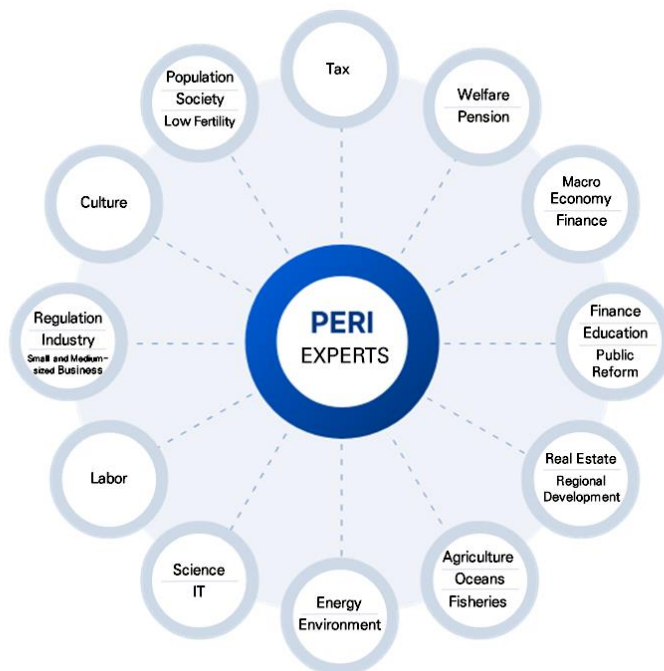


4. Consulting

PERI experts, comprising former vice ministers, research directors, professors and other specialists in various policy-related fields, provide policy consulting both online and offline.

Online Consulting

Stay updated on the latest policy issues by checking real-time insights uploaded by PERI experts on askPERI



Offline Consulting

In-person consulting for a specific policy issue is provided upon request, offering offline consulting

Homepage

www.perikorea.org/



HOME PAGE

YouTube

www.youtube.com/@peri_org



YOUTUBE

askPERI

<https://askperi.kr/>



askPERI