



Policy Evaluation  
Research Institute

## President's Message

---

Policy belongs to the people, but our people have always been isolated and victimized by populism.

For this reason, we need to evaluate policies to ensure that they are no longer an object of indifference to the people or a means of deception.

The Policy Evaluation Research Institute (PERI) will fulfill this task of the times. We will gather policy experts from Korea and around the world to properly evaluate each policy and ensure that the public is involved and centered in the pre- and post-evaluation process.

In particular, the four Policy Centers—the Tax, Finance, and Education Policy Center; the Finance, Real Estate, and Regulatory Policy Center; the Welfare, Labor, and Population Policy Center; and the Sustainable Development Policy Center—are dedicated to scientifically evaluating our economic and social policies. More than 50 research fellows, including former ministers, vice-ministers, institute heads, and presidents of academic societies, who possess the highest levels of experience and expertise in government and academia, are working with the utmost dedication.

PERI launches *askPERI*, an AI-based, all-in-one policy platform on March 5, 2024

*askPERI* offers consolidated search results and analysis of policy information scattered across various sources, including the National Assembly, the government, and public institutions. Additionally, it provides tailored information services for registered members from the government, businesses, associations, public institutions, media, and more.

As a private research institute, PERI will always stand with the people, playing a significant role for making right policies and contributing to the development of Korean society.

Thanks for your interest and support.

2024. 9

**Chong-Bum An**  
**President, Policy Evaluation Research Institute (PERI)**

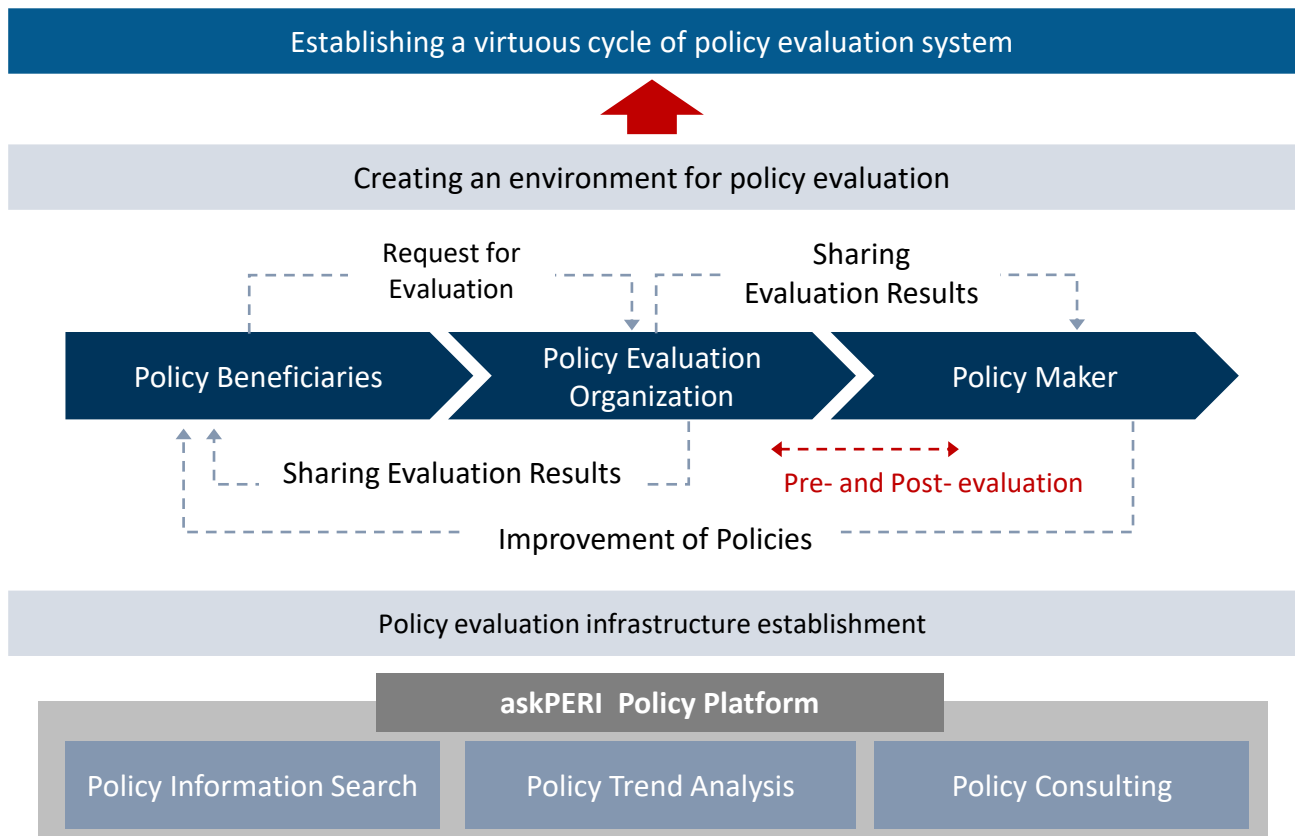
---

## Goals and Vision

- PERI set the goal to be Korea's leading private think tank.

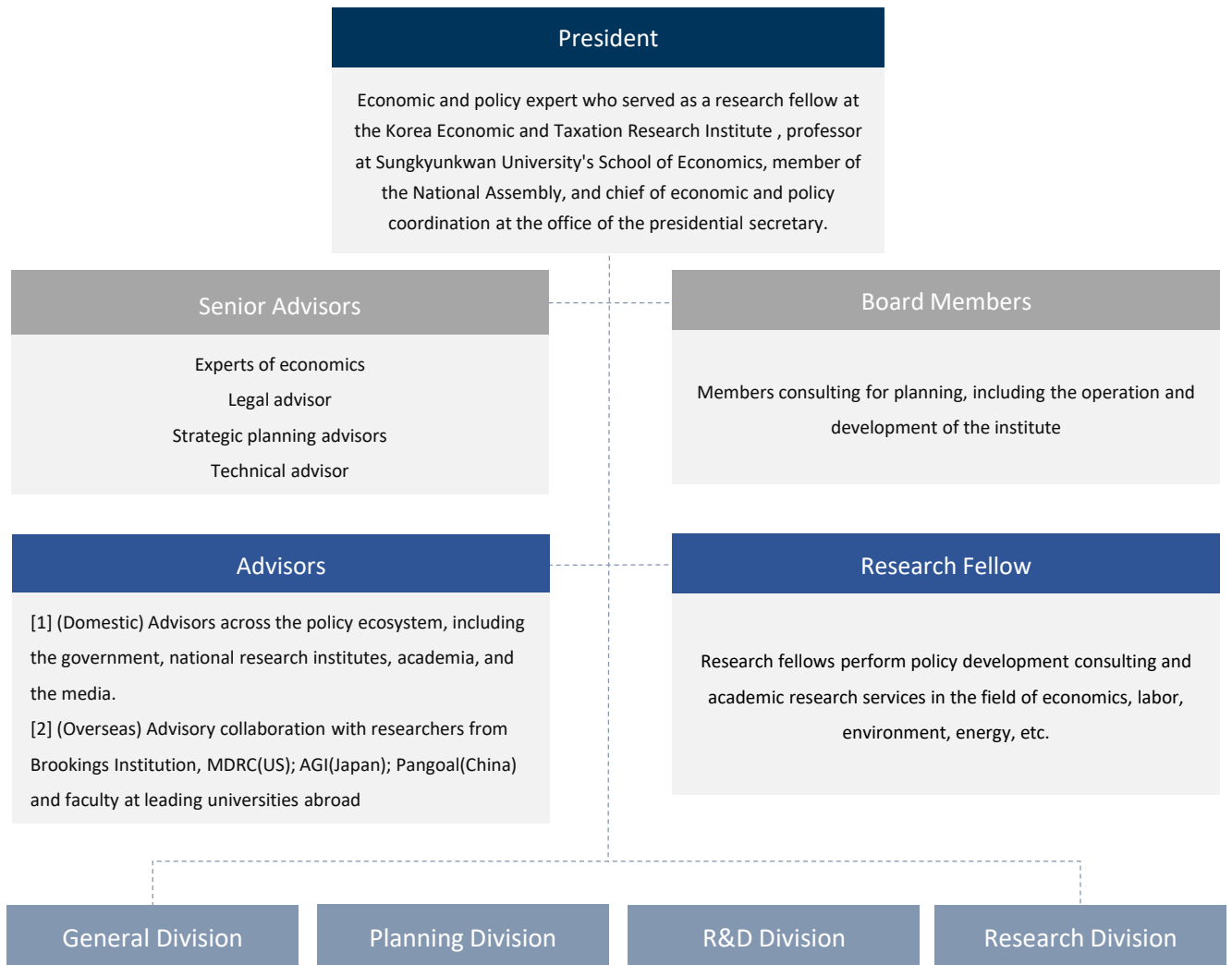


- PERI will lay the foundation for the policy evaluation system.

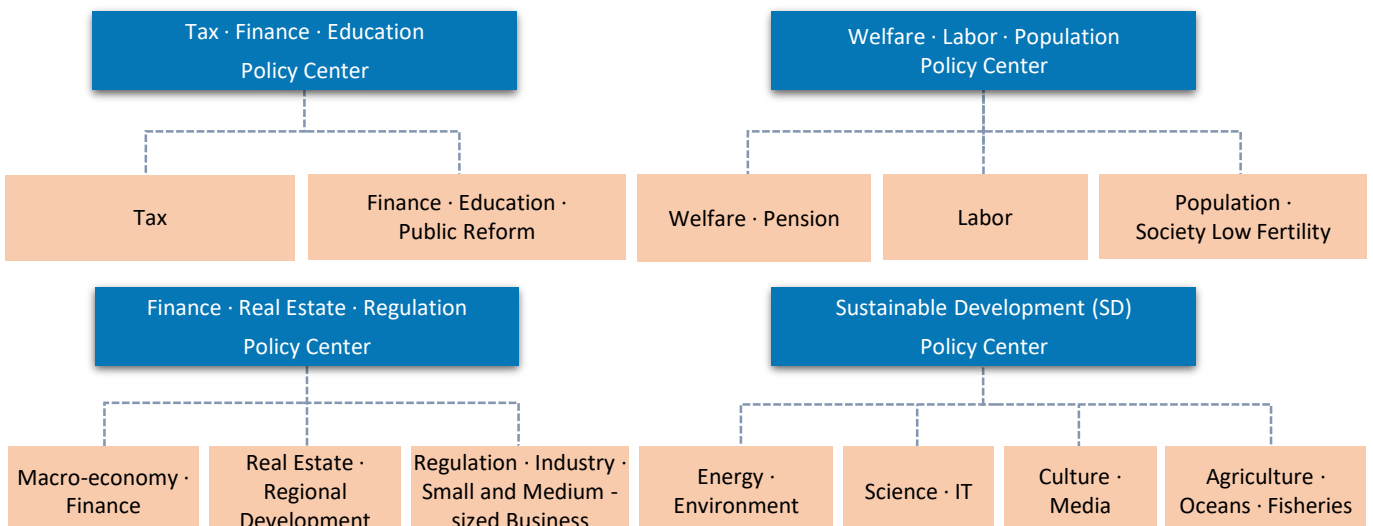


## Organization

- PERI works with top-class domestic and international experts.



- The policy centers are operated by leading experts in Korea.



Senior Advisors (3)

In-ho Kim	<p>Chairman, Market Economics Research Institute                  (Former) President, Korea International Trade Association                  (Former) Presidential Economic Advisor                  (Former) Chairman, Fair Trade Commission</p>
Seung-hoon Lee	<p>Emeritus Professor, Department of Economics, Seoul National University                  (Former) Chairman, Presidential Committee on Green growth                  (Former) President and CEO of Korea Gas Corporation                  (Former) Professor of Economics, Seoul National University</p>
Hak-gil Pyo	<p>Emeritus Professor of Economics, Seoul National University                  (Former) Member of the Presidential Advisory Policy Planning Committee (Kim Young-sam government)                  (Former) President, Korea International Economic Association                  (Former) Professor of Economics, Seoul National University</p>

Legal Advisor (1)

Young-kun Hong	<p>Representative Attorney at Law Firm Dajeon                  (Former) Associate Judge of Suwon District Court</p>
----------------	---

Strategy Advisors (2)

Soo-hyun Kang	<p>CEO, The Name Project                  (Former) Advisor, SM Entertainment                  (Former) Division Director, SM C&amp;C</p>
Dong-won Cho	<p>Copywriter, The Name Project                  (Former) Advisor, SM Entertainment                  (Former) Director, Munhwa Industry Forum</p>

Technology Advisor (2)

Ki-hyun Kim	<p>CEO, Transfarmer                  Korea Representative, DAMA(Data Management Association)                  (Former) Professor, Dept. of Convergence Service Management, Hallym University of Graduate Studies                  (Former) Director, Dept, of Strategic Consulting, KPMG Samjong Accounting Corp.</p>
Jin-Bae Lee	<p>CEO, ADONE Co., Ltd.                  (Former) Audit Committee Member, Cheongho Comnet Co., Ltd.                  (Former) Director, Soribada Co., Ltd.</p>

## PERI Experts

### Board Members (3)

Myeon-wook Kang	(Former) Head of Fund Management Division, National Pension Service, Fund Director (Former) President and CEO, Meritz Asset Management (Former) Korea Representative, ABN AMRO Asset Management
Wang-seon Kim	Representative, Urban Engineering General Architect Office Chairman, Yongha Construction
Byung-in Lim	Professor of Economics, College of Social Sciences, Chungbuk National University (Former) Director, Korea Social Security Information Service (Former) Advisor, National Economic Advisory Council

### Research Fellows (40)

Tax · Public Finance · Education Policy Center	Tax	Nak-hoe Kim	Advisor, Law Firm Yulchon (Former) Commissioner of Korea Custom Service
		Myung-ho Park	Professor of Department of Economics, Hongik University (Former) General Manager of Estimated Tax Analysis Office, National Assembly Budget Office
		Won-ik Son	Visiting Professor, Yonsei University Graduate School of Social Work (Former) Vice President, Korea Institute of Public Finance
	Gyeong-lyeob Cho	Senior Research Fellow, Korea Economic Research Institute (Former) Team Leader, Revenue Tax Analysis, National Assembly Budget Office	
	Public Finance · Education · Public Reform	Sang-ho Kim	Professor of Basic Education, Gwangju Institute of Science and Technology (Former) President, Korea Institute for Health and Social Affairs
		Heon-jae Song	Professor, Department of Economics, Seoul City University (Former) Associate Researcher, Korea Institute of Public Finance
		Il-ho Yoo	Special Professor, Yonsei University Business School (Former) Deputy Prime Minister for Economic Affairs and Minister of Strategy and Finance
		Cheol-in Lee	President, Korean Society of Finance (Former) Professor, Department of Economics, Seoul National University
		Young-joon Jeon	Professor of Economics and Finance, Hanyang University (Former) President, Korean Society of Finance

Research Fellows (40)

Welfare · Labor · Population Policy Center	Welfare · Pension	Sang-ho Kim	Professor of Basic Education, Gwangju Institute of Science and Technology (Former) President, Korea Institute for Health and Social Affairs
		Hyung-pyo Moon	(Former) Chairman, National Pension Service (Former) Minister of Health and Welfare
		Kyung-zoon Hong	Professor Sungkyunkwan University (Former) President of Korean Academy of Social Welfare
	Labor	Dae-il Kim	Professor, Seoul National University (Former) Researcher, Korea Development Institute
		In-jae Lee	Professor, Incheon National University (Former) President, Korea Labor Institute
	Population · Society · Low Fertility	Hyun-sook Kim	Professor of Economics, Soongsil University (Former) Minister of Gender Equality and Family
		Seul-gi Choi	Standing Committee member, Low Birth Rate and Aging Society Committee (Former) Professor, KDI School of Public Policy and Management
		Joon Han	Professor of Sociology, Yonsei University (Former) President of Korea Social Science Data Archive
	Finance · Real Estate · Regulation Policy Center	Macro-economy · Finance	Jung-soo Park
Dong-hyun Ahn			Professor of Economics, Seoul National University (Former) President, Korea Capital Market Institute
Real Estate · Regional Development		Hyun-a Kim	Visiting Professor, Gachon University (Former) Member of the 20th National Assembly
		Duk-bae Park	Professor, Kookmin University (Former) Specialized Researcher, Hyundai Research Institute
		Hyung-ho Yoon	Honorary Research Fellow, Seoul Institute (Former) Director of Seoul Public Investment Management Center, Seoul Institute
Regulation · Industry · Small and Medium-sized Business		Se-jong Kim	President, Innobiz Policy Research (Former) President, Korea Small Business Institute
		Jong-seok Kim	Private Chairman of the Regulatory Reform Committee (Former) Member of the 20th National Assembly
		Sung-ho Choi	Professor, Kyonggi University of Public Administration (Former) Secretary, Ministry of Trade, Industry and Energy

Research Fellows (40)

Sustainable Development (SD) Policy Center	Energy · Environment	Man-ok Kang	Specialized Professor , Busan University (Former) Senior Research Fellow, Korea Environment Institute
		Hyung-gun Kim	Professor, Kangwon National University (Former) Research Fellow of Energy Economics Research Center
		Joo-heon Park	Professor of Economics, Dongduk Women's University (Former) President of Energy Economics Research Center
		Yang-hoon Son	Professor of Economics, Incheon National University (Former) President, Korea Energy Economics Institute
		Won-chul Yoon	Researcher, Korea Electric Power Industry Institute (Former) Professor of Economics and Finance, Hanyang University
	Science · IT	Do-hwan Kim	Professor of Business Administration, Sejong University (Former) President, Korea Information Society Development Institute
		Hyung-taek Ahn	Professor of Economics, Dongguk University (Former) Research Fellow, Korea Information Society Development Institute
		Chang-bun Yoon	Counselor, Kim & Chang Law Firm (Former) Senior Secretary for Future Strategy, Presidential Secretariat
		Shin Cho	Visiting Professor, Yonsei University Graduate School of Information (Former) Senior Secretary for Future Strategy, Presidential Secretariat
	Culture · Media	Hyo-shang Kang	Advisor, DR & AJU LLC (Former) Member of the 20th National Assembly
		Myung-seong Park	Art Director, Seensee Company (Former) Chairman, Korea Musical Association
		Eun-ah Cho	Professor, Graduate School of Chugye University for the Arts Commissioner, Regulatory Reform Commission, Ministry of Culture, Sports and Tourism
	Agriculture · Oceans · Fisheries	Min-sook Kyu	Distinguished Professor, Sejong University (Former) Vice Minister, the Ministry of Agriculture, Food, and Rural Affairs
		Hwang-geun Jeong	(Former) Minister of Agriculture, Food and Rural Affairs (Former) Commissioner of Rural Development Administration
		Hak-bae Yoon	Distinguished Professor, National Korea Maritime and Ocean University (Former) Vice Minister, Ministry of Oceans and Fisheries



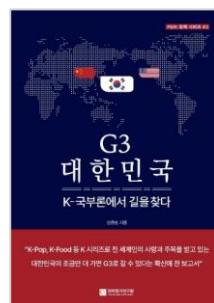
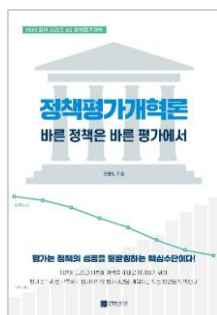
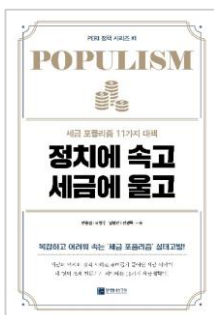
## PERI Major Events

2022.05.23.	Establishment of PERI
2023.01.20.	Publication of PERI Book #1; “Fooled by Politics, Crying over Taxes”
2023.03.13.	Publication of PERI Book #2; “Policy Evaluation Reform: The Right Policy Starts with the Right Evaluation”
2023.03.14.	2023 PERI Vision Meeting
2023.06.19.	MOU between PERI and Pangoal(China)
2023.06.20.~21.	Hosting PERI Symposium 2023 with theme of ‘A New Horizon for Policy Evaluation’
2023.07.25.	Publication of PERI Book #3; “G3 South Korea: Finding the Way”
2023.09.06.	Certification as Venture Enterprise by Korea Venture Business Association
2023.09.25.	MOU between PERI and Law Firm Hwawoo(Yoon & Yang LLC)
2023.10.12.	MOU between PERI and AGI(Asian Growth Research Institute, Japan)
2023.11.14.	Publication of PERI Book #4; “A New Horizon for Policy Evaluation”
2024.01.01.	Launch of askPERI (Beta Version)
2024.03.05.	AI-based one-stop policy platform, askPERI officially launch
2024.03.26.	2024 Policy Evaluation Institute (PERI) Vision Forum and Tax Reform Meeting
2024.06.18.	2024 PERI-EDAILY Special Symposium
2024.09.19.	Launch of the Policy Evaluation Research Institute (PERI) Policy Centers (Tax, Finance, and Education Policy Center; Welfare, Labor, and Population Policy Center; Finance, Real Estate, and Regulation Policy Center; Sustainable Development (SD) Policy Center

- On June 20 and 21, 2023, PERI Symposium 2023 was held at COEX Auditorium under the theme of ‘A New Horizon for Policy Evaluation’. Additionally, on June 18, 2024, a joint PERI-EDAILY symposium was held as the first event of the three-day EDAILY Strategy Forum.



- PERI has published PERI Policy Series.



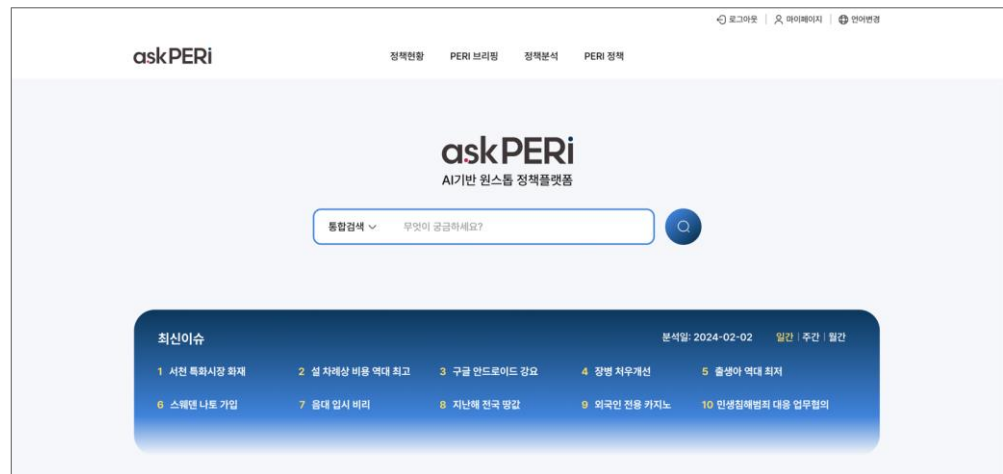
# askPERi

## AI Based Policy Platform

### 1. Consolidated Search Result in One Place

askPERi generates consolidated search results of policy data scattered across multiple sources, including parliament, government, public organizations, and more.

All About Policy  
askPERi



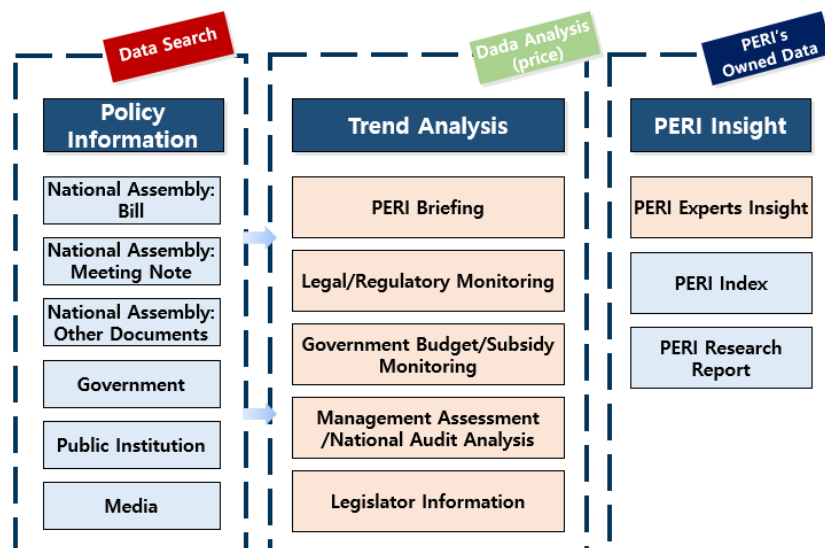
\* Korean language service only.

### 2. Policy Trend Analysis

askPERi keeps you abreast of the latest developments in crucial legislative changes, regulations, government policies, and more through the following services:

- ① Legal/Regulatory Monitoring
- ② Government Budget Monitoring
- ③ Integrated Analysis of Bills
- ④ Legislator Information
- ⑤ Management Assessment/  
National Audit Analysis
- ⑥ PERi Expert Insight

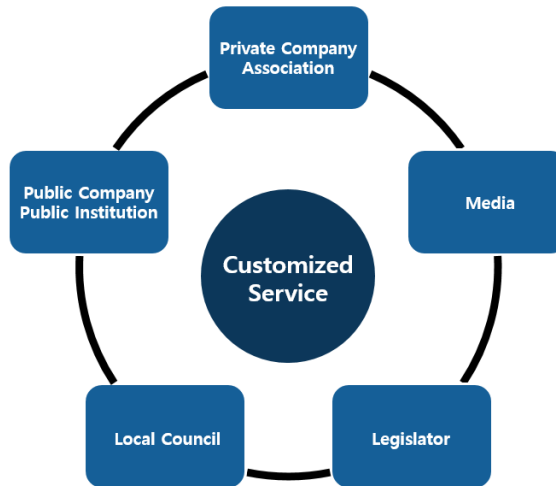
askPERi  
Service Map



- askPERI is an AI-based, all-in-one policy platform developed by PERI to provide the following services.

### 3. Customized Service

askPERI provides tailored information services for registered members from the government, businesses, associations, public, institutions, media, and more.



### 4. Consulting

PERI experts, comprising former vice ministers, research directors, professors and other specialists in various policy-related fields, provide policy consulting both online and offline.



## Homepage

[www.perikorea.org/](http://www.perikorea.org/)



HOME PAGE

## YouTube

[www.youtube.com/@peri\\_org](http://www.youtube.com/@peri_org)



YOUTUBE

## askPERI

<https://askperi.kr/>



askPERI